



## **Proaira HTR100: Oil-Filled Radiator Heater, 1500W**

INSTRUCTIONS FOR USE

**PLEASE READ AND SAVE THESE IMPORTANT INSTRUCTIONS**

## **INTENDED USE**

This product is intended **ONLY** for indoor household or office use.

It is **NOT** intended for industrial or commercial use. Do not use the product outdoors.

# **IMPORTANT INSTRUCTION**

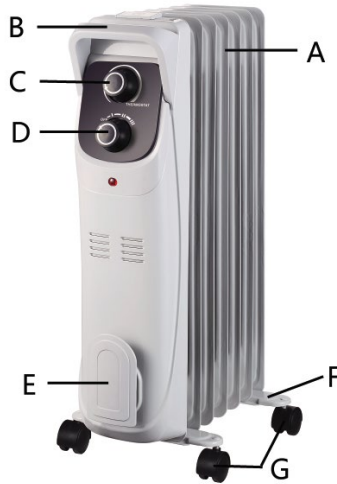
PLEASE READ AND SAVE THESE IMPORTANT SAFETY INSTRUCTIONS. When using electrical appliances, the following basic precautions should always be followed to reduce the risk of fire, electric shock, and injury to persons:

1. Read all instructions before using this heater.
2. This heater is hot when in use. To avoid burns, do not let bare skin touch hot surfaces. If provided, use handles when moving this heater. Keep combustible materials, such as furniture, pillows, bedding, papers, clothes, and curtains, at least 3 feet (0.9m) from the heater.
3. Extreme caution is necessary when any heater is used by or near children or the disabled and whenever the heater is left operating and unattended.
4. Always unplug heater when not in use.
5. Do not operate any heater with a damaged cord or plug or if the heater has been dropped or damaged in any manner. Discard the heater or return it to an authorized service facility for examination and/or repair.
6. Do not use the heater outdoors.
7. Use your heater only in dry environments. This heater is not intended for use in bathrooms, laundry areas, or similar places. Never locate the heater where it may fall into a bathtub or other water containers.
8. Do not run the cord under carpeting. Do not cover the cord with throw rugs, runners, or other similar coverings. Do not route cord under furniture or appliances. Make sure the cord is located where it will not be stepped on, tripped over, or otherwise subjected to damage or stress.
9. To disconnect the heater, turn controls off then remove plug from outlet.
10. Do not insert or allow foreign objects to enter any ventilation or exhaust opening as this may cause an electric shock or fire or damage the heater.
11. To prevent a possible fire, do not block air intake or exhaust in any manner. Do not use the heater on soft surfaces, like a bed, where openings may become blocked.
12. The heater has hot and arcing or sparking parts inside. Do not use it in areas where gasoline, paint, or flammable liquids are used or stored.
13. Use this heater only as described in this manual. Any other use not recommended by the manufacturer may cause fire, electric shock, or injury to persons.
14. Always plug heaters directly into a wall outlet/receptacle. Never use with an extension cord or relocatable power tap (outlet/power strip).

# **SAVE THESE INSTRUCTIONS**

## Description of Device

- A- Radiator fin
- B- Handle
- C- Adjustable thermostat
- D- Power switch
- E- Cord storage
- F- Wheel base
- G- Wheel



## Technical Specification

Power: 1500W

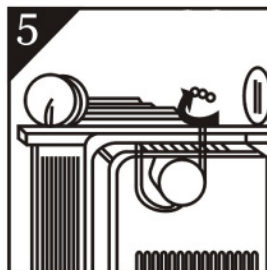
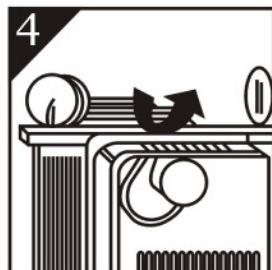
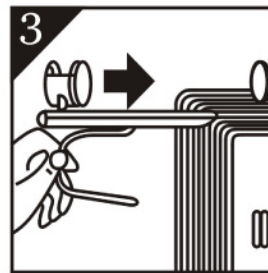
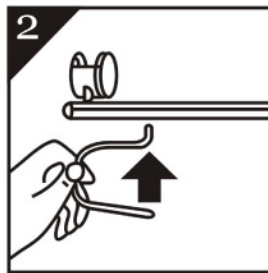
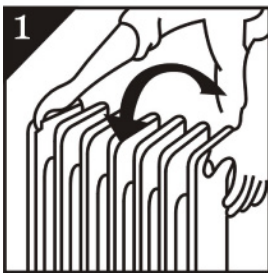
Voltage & Frequency: 120VAC 60Hz

## Assembly Instruction

1. Turn the radiator upside-down on a scratch-free and stable surface to prevent damage to the paint finish or your floor surfacing (see Fig 1)
2. Fit the castor assemblies onto the radiator by placing the U-shaped bolts between the outermost fins on each side of the radiator (see Fig.2 - 4).
3. Securely fasten the castor assemblies onto the radiator by screwing the wing nuts onto the bolts (see Fig. 5).

**WARNING:** Only operate the radiator in normal upright position with wheels assemblies attached to the bottom (wheels at the bottom, controls on the top), any other position could create a hazardous situation

If you are in any doubt about installing this product, consult a qualified electrician.



## **Operating Instructions**

1. Place the product in an upright position on a flat, steady, stable, heat-resistant surface. Make sure there is nothing flammable or heat sensitive within 1 meter (40 inches). Operating the product in any other position could cause a hazard.
2. Insert the plug into a suitable wall outlet after turning the thermostat knob counter-clockwise to the minimum position and setting the power switch to off. The heater is suitable for operation on an A.C. electricity supply having the same voltage as that show on its rating label.
3. Turn the power switch from "OFF" to either "I" (Minimum heating), or "II" (Medium heating) or "III" (Maximum heating).
4. Turn the thermostat knob clockwise to maximum position. When the room temperature rises to a comfortable level, slowly turn thermostat counter-clockwise until the thermostat shuts off (you will hear a faint "click" sound).The thermostat can now be left at this setting. To adjust the room temperature turn the thermostat clockwise to raise the temperature, or counter-clockwise to lower it. Thus the heater will attempt to keep the room temperature at the desired level.
5. To turn off the heater, set the power switch to "OFF" position. Unplug the product from the electrical outlet when it is left unattended or is not in use.

## **Tip-over protection**

This heater is protected with a safety switch that turns off the appliance automatically when the heater falls over, or is at an excessive angle from the horizontal. This helps prevent accidents, and the heater will resume operation when it is put back upright.

## **Overheat protection**

This heater is protected with overheat protection that switches off the appliance automatically in case of severe overheating. In this case, unplug the appliance, wait about 30 minutes for it to cool and remove any possible cause of overheating (example: something covering the heater). Check for damage to the appliance, the cord and the plug. If there is no damage, plug the unit back in and switch it on as described above. If the heater still does not turn on, please contact Customer Service for assistance.

## **Maintenance and cleaning**

The appliance should be regularly cleaned when in use in accordance with the following instructions:

1. Unplug and let the appliance cool before cleaning.
2. Gently clean the outside surface and the control panel of the appliance with a damp lint-free soft cloth.
3. If dust is present within the slits of the device, it is recommended to blow them with the use of a vacuum cleaner or blower.
4. Do not use harsh detergents, chemical cleaners, or solvents as they may damage the appliance feet.

## **Storage**

- 1.Keep the original packaging to disassemble the appliance and store it.
- 2.Keep the appliance in a dry and clean place.
- 3.Store the unit out of reach of children.

**LIMITED WARRANTY:**

A limited warranty is extended to the original purchaser of this heater and Proaira warrants against malfunction due to defects in material or workmanship for a period of one (1) year from the original date of purchase (the "Warranty Period"). If such a defect is discovered within the Warranty Period, Proaira will, at its option, repair or replace the product at no cost\*, after a thorough review of the defect. Replacements outside of the Warranty Period will require a fee to cover materials, labor, handling and shipping.

This limited warranty does not apply to defects resulting from misuse or use contrary to the owner's manual and safety guidelines, , damage caused by an improper voltage, damage caused by use outdoors, modification, alteration, repair or service of the product by a third party, mishandling, improper maintenance, commercial use of the product, damages which occur in shipment or are attributed to acts of God.

This limited warranty does not imply or assume any responsibility for consequential damages that may result from the use, misuse, or the lack of routine maintenance of this heating appliance. This limited warranty does not cover claims which do not involve defective material or workmanship. FAILURE TO PERFORM GENERAL MAINTENANCE WILL VOID THIS LIMITED WARRANTY.

THIS LIMITED WARRANTY IS GIVEN TO THE ORIGINAL PURCHASER IN LIEU OF ALL OTHER WARRANTIES, EXPRESS OR IMPLIED, INCLUDING BUT NOT LIMITED TO THE WARRANTIES OF MERCHANTABILITY OR FITNESS FOR A PARTICULAR PRODUCT. THE REMEDY PROVIDED IN THIS LIMITED WARRANTY IS EXCLUSIVE AND IS GRANTED IN LIEU OF ALL OTHER REMEDIES. IN NO EVENT WILL PROAIRA BE LIABLE FOR INCIDENTAL OR CONSEQUENTIAL DAMAGES.

Some states do not allow the exclusion or limitation of incidental or consequential damages or allow limitations on how long an implied warranty lasts, so the above limitations or exclusions may not apply to you. This limited warranty gives you specific legal rights, and you may have other rights that vary from state to state.

For full details, please contact Proaira Customer Service with proof of purchase.

Customer Service:

Phone: (877) 599-4747

Fax: (877) 600-4747

Email: [info@proaira.com](mailto:info@proaira.com)

Manufactured for:

Proaira

1060 Commerce Ave.

Union, NJ 07083 USA

(877) 599-4747

[www.proaira.com](http://www.proaira.com)